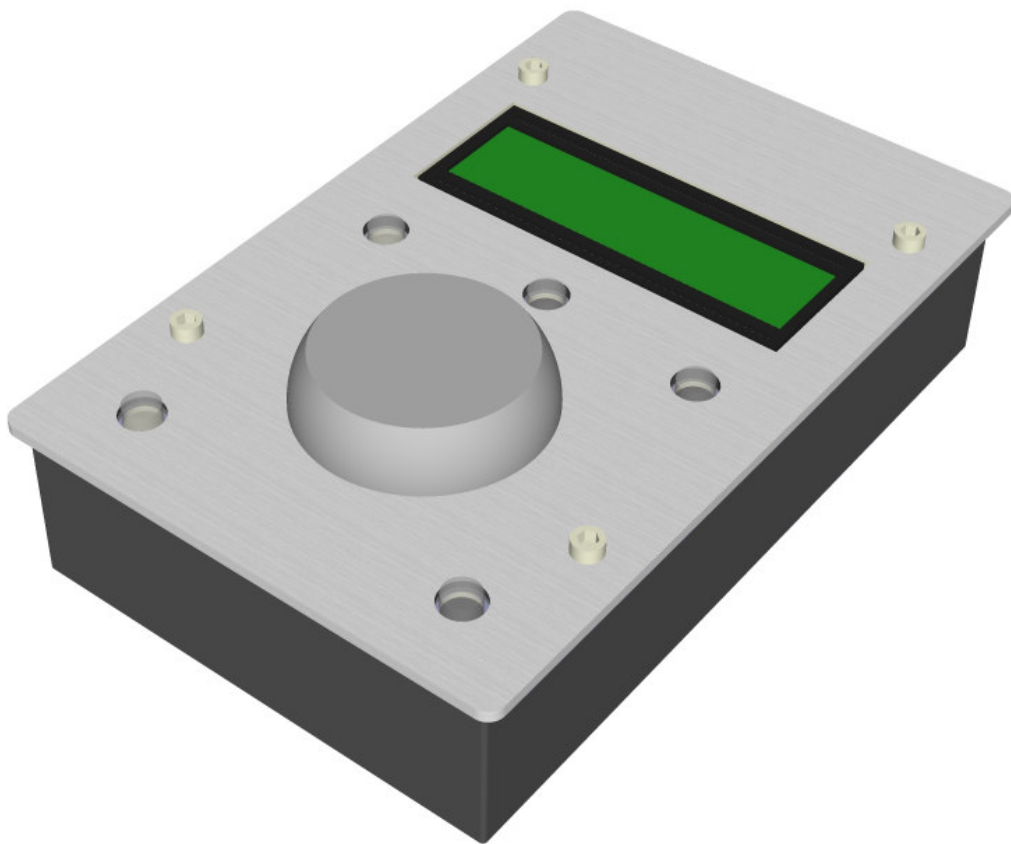


REMOTE CONTROL



USER MANUAL

ATD² (Audio Technology Design & Distribution)
Rue Poissonrue, 43 - 4500 Huy - Belgium
Email: info@atd2.com – WEB: www.atd2.com

TABLE OF CONTENT

1	INTRODUCTION	4
1.1	This Manual	4
1.2	The Product Concept.....	4
2	PRODUCT DESCRIPTION	5
2.1	Hardware	5
2.2	Display information	6
3	CONTROL PARAMETERS	7
3.1	Network scan.....	7
3.2	System Level.....	7
3.3	Operation mode (Curves and EQ sets)	7
3.4	System Mute	8
3.5	System Dim	8
4	Connection to speakers.....	9

REVISION HISTORY

Date	Version	Author	Change
2007-05-10	1.0	X. Lambrecht	Initial revision

PRODUCT COMPLIANCE

The Remote Control complies with the following specifications:

- **EN 55022:** Information technology equipment. Radio disturbance characteristics. Limits and methods of measurement (Class B)
- **EN 60065:** Safety requirements for main operated electronics and related apparatus for household and similar general use.
- **89/336/EEC** European Directive on electromagnetic compatibility (harmonized standard)

1 INTRODUCTION

1.1 This Manual

The latest manual revision is always available for download from www.atd2.com. Please compare to the revision number of the manual (see page 4) available for download from our web-site and download if newer. The present document will describe how to connect and use a speaker system using the remote control.

1.2 The Product Concept

The remote control is a complement to the FAR Active Monitors products. It connects to the FAR Link™ network and controls the system level, the Curve and EQ set in use. It also allows a system mute and a level dim function.

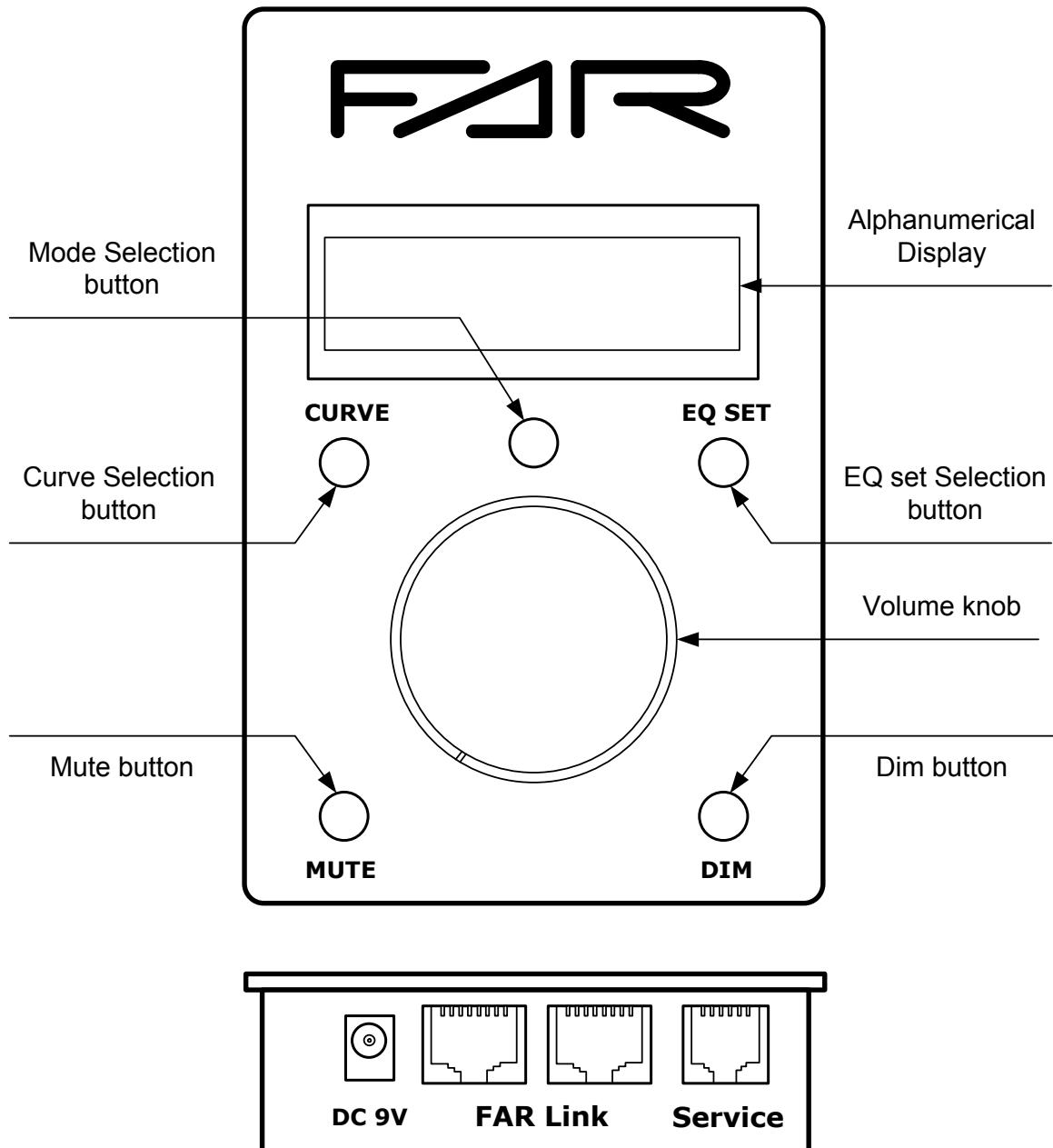
The remote control fully uses the powerful and robust features of the FAR Link™ communication network.

Every control applies to all the speakers connected to the network. With this basic remote control, it is not allowed to address individually a speaker.

2 PRODUCT DESCRIPTION

2.1 Hardware

The remote control has 5 push buttons and one rotary knob. The push buttons are equipped with bi color leds that indicates the status of the control. The alphanumerical display indicates the value of all the parameters that can be controlled by the remote control.

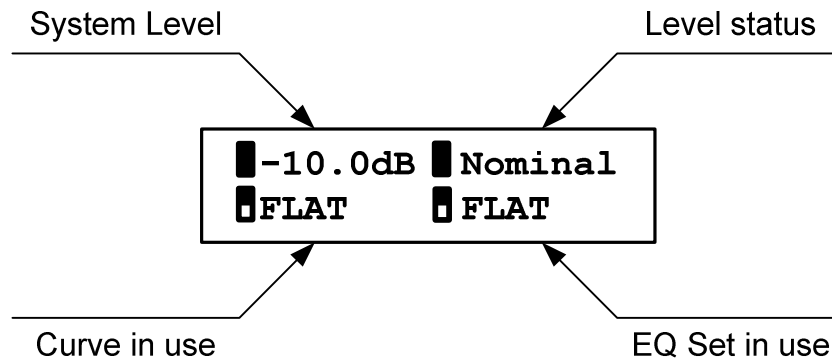


The remote control has 4 connectors.

- DC 9V supply connector. It shall normally not be used as the remote control gets its supply from the FAR Link™ network.
- Two FAR Link™ connectors. They are both equivalent (no special IN/OUT difference).
- A service connector that is not to be used by the end-user. It's a factory control port.

2.2 Display information

In nominal operation, the display is divided in 4 zones.



The button light color also gives indications. When the color is red, it means that the system is in a state that might affect the sound reproduction.

For instance, when the speakers are muted, the mute button becomes red. In nominal operation, the mute button is red.

The same apply to the selection buttons of the curves and EQ sets. When the selected correction is "FLAT", the buttons are green. If another correction is engaged, the buttons become red.

3 CONTROL PARAMETERS

3.1 Network scan

When the remote control is powered ON, it scans the network to find what the speakers present are and downloads all the necessary information from them.

A network scan can be manually initiated by pressing the **mute** button till the scan starts. During the scan, the buttons are blinking (green and red). The display shows the speaker address and name of the one that are present on the network.



Once the scan is finished, the display comes back to the nominal print.



3.2 System Level

The system level can be set by turning the rotary knob. The level ranges from -40 dB to +20 dB by step of 0.5 dB.

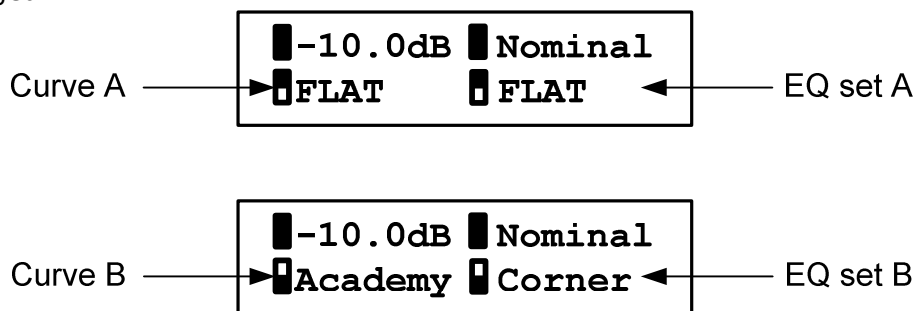
The level control is master on the **mute** and **dim** controls. Turning the knob will always unmute or undim the system and set back the system level accordingly to the knob position.

When the knob is in turned to the maximum left (-40 dB), it also mute the system.

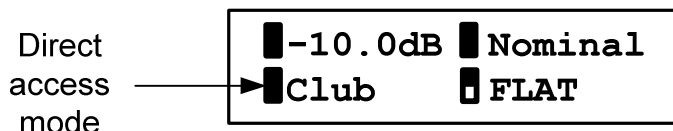
3.3 Operation mode (Curves and EQ sets)

There are 2 ways to select the curves and EQ sets.

- An A/B selection. A press on the button will toggle the system between two curves or EQ sets. This mode allows proceeding to easy listening comparison. The symbol in front of the curve or EQ name shows which of the A/B curves is engaged.



- Direct access to curves or EQ sets. Keep the **mode** button pressed while the **curve** or **EQ set** button is pressed. When the selection button (**curve** or **EQ set**) is released, the curved or EQ set displayed on the screen is applied. In this case, the symbol in front of the curve or the EQ set name becomes a plain rectangle.



The programming of the A and B selections is performed via the **mode** button. When the mode button is pressed shortly, it becomes first green. The remote control is now in the A selection mode. The display also shows larger symbols in front of the curve and EQ set names. Pressing the **curve** or **EQ set** button will sequentially display the available settings. Once the desired one is reached, do not press the button anymore. A second press on the **mode** button will turn it red. The remote control is now in the B selection mode. Proceed as for the A selection to get the right settings. When finished, press again the **mode** button. The light will switch off, the programming is over.

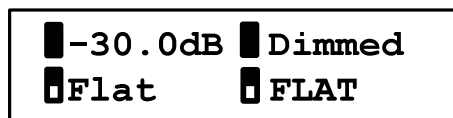
3.4 System Mute

Press the **mute** button to mute the system. The **mute** button becomes red when mute is engaged.

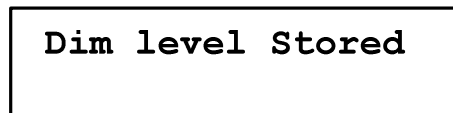


3.5 System Dim

Press the **dim** button to select a programmed level. The **dim** button becomes red when dim is engaged.

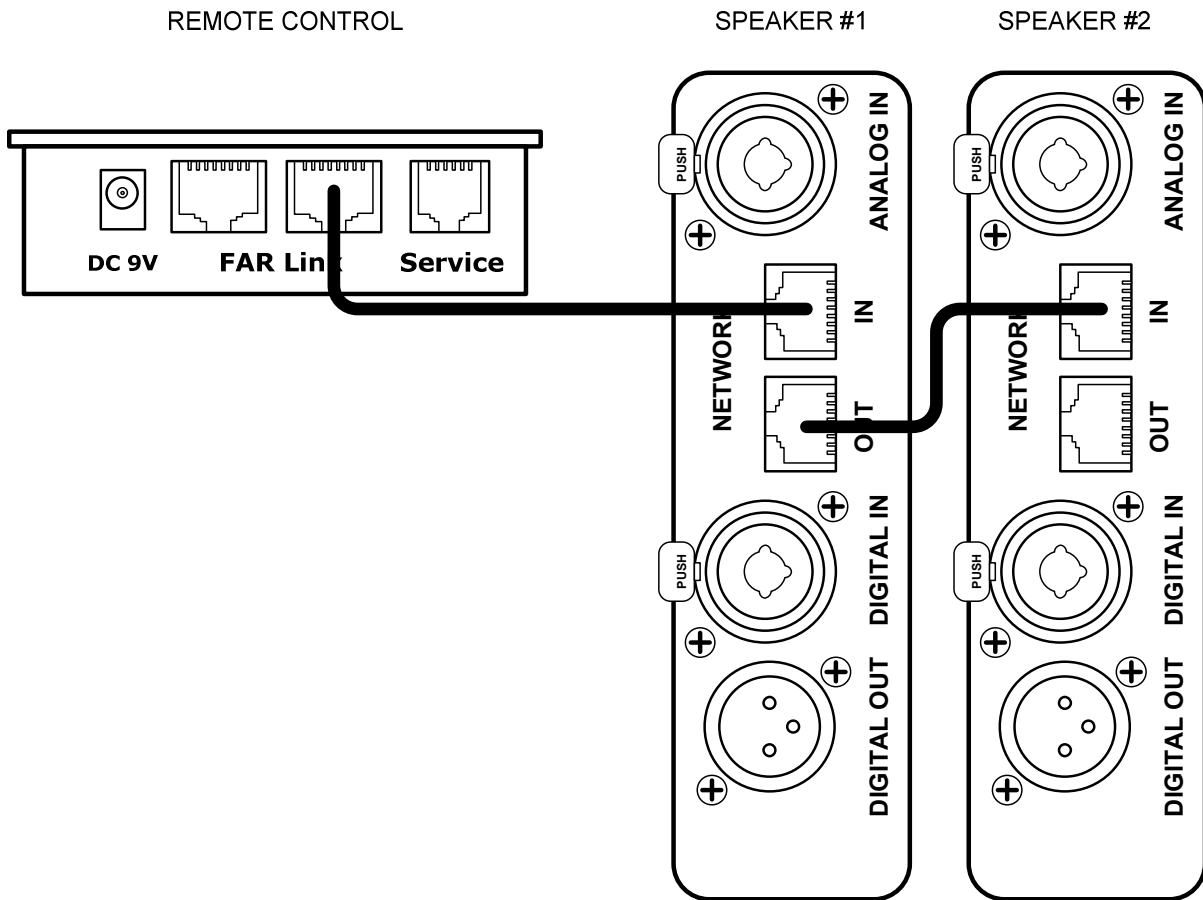


The dim level can be set by adjusting the desired level with the rotary knob and pressing the **dim** button till the display shows "Dim level stored" then release the **dim** button. This level will remain stored in the remote control, even if the device is switched off.



4 Connection to speakers

The remote control shall be connected to the Network In connector of a speaker of the network. The chaining order does not matter for the control network.



The second network connector of the remote control can be used to connect the USB <-> FAR Link dongle to the speaker network without the need to unplug the remote control.